

COMMUNITY REPORT 2017





# A LOOK AHEAD

Thanks for the warm welcome I've received as Baptist Health's new CEO. I look forward to supporting our hospitals and physician practices in working with our schools, local government, social service organizations and community leaders to fulfill our mission of addressing each community's health concerns.

Baptist Health has expanded that mission to include Baptist Health Floyd (formerly Floyd Memorial Hospital and Health Services) in 2016. We are now deep in talks with 20-year partner Hardin Memorial Health to formally join our system.

Baptist Health's reach has now grown to eight hospitals plus physician offices, urgent and express care clinics, outpatient facilities, home care, telemedicine and ambulance services.

You might not realize that Baptist Health:

- Is Kentucky's largest not-for-profit health system
- Employs more than 21,000
- Serves 75 percent of Kentucky's population

While Baptist Health is growing and changing with the times and trends, one thing remains the same: our commitment to treat-you-like-family care.



A handwritten signature in black ink, appearing to read "Gerard Colman".

Gerard Colman  
Baptist Health CEO



**U.S. News & World Report** – For the sixth consecutive year, Baptist Health Lexington and Baptist Health Louisville rank among the state's top five best hospitals.



**Magnet® for nursing excellence** – Baptist Health Lexington has earned this designation three times from the American Nurses Credentialing Center (ANCC); Baptist Health Louisville, twice.



**Pathway to Excellence® for encouraging nurses to excel** – Baptist Health is the only Kentucky healthcare system to have all of its eligible owned hospitals earn this ANCC designation, including the most recent, Baptist Health Richmond.

## MISSION

Baptist Health demonstrates the love of Christ by providing and coordinating care and improving health in our communities.

## VISION

Baptist Health will lead the transformation to healthier communities.

## FAITH-BASED VALUES

Integrity, Respect, Excellence, Collaboration, Compassion and Joy.

## COMMITMENT TO PATIENT SAFETY

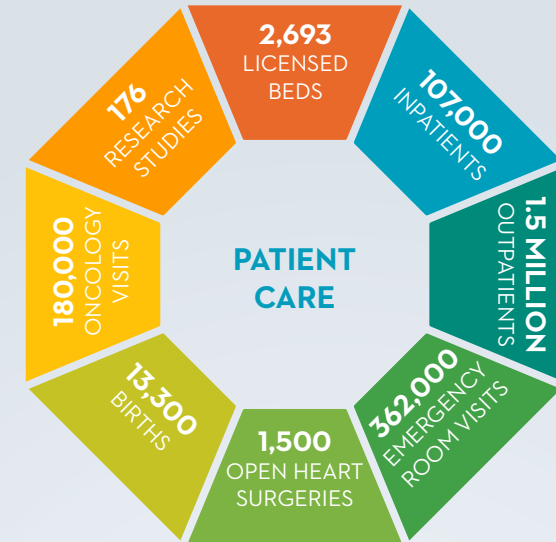
Continuously improving patient outcomes by creating a highly reliable organization focused on a culture of safety, process excellence, and zero patient harm.

*On the cover:* Radiation Oncologist Marta Hayne, MD, talks with a patient in the Dr. Eugene Q. and Joan Parr Healing Garden at Baptist Health Lexington.

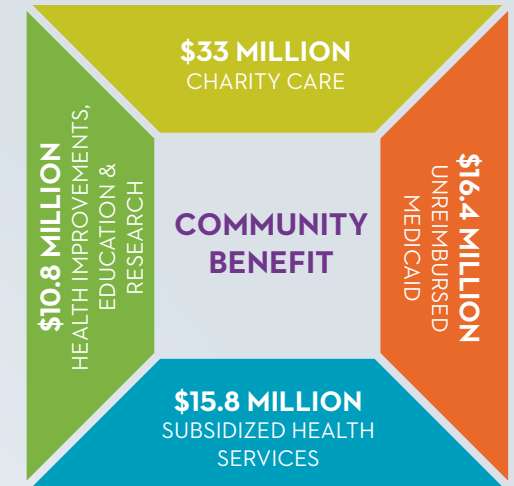
# BY THE NUMBERS



"I cannot stress enough the importance of a quality, reputable healthcare facility such as Baptist Health in our region, when recruiting and retaining industry and business."  
 –Bruce Carpenter, Corbin Economic Development and Southern Kentucky Chamber of Commerce executive director



"They were all there every step of the way, just answering my questions and trying to calm my fears as much as they possibly could. Anything I needed they were there and willing to help, really going above and beyond what I could've really expected."  
 –Kara Davis, Cancer Care patient



"This is a great example of how community partnerships help our schools become extraordinary." –Lori Dexter, Crofton Elementary principal, on the Project Fit America program to boost childhood fitness. Baptist Health hospitals have assisted 39 schools, providing fitness equipment and curriculum.

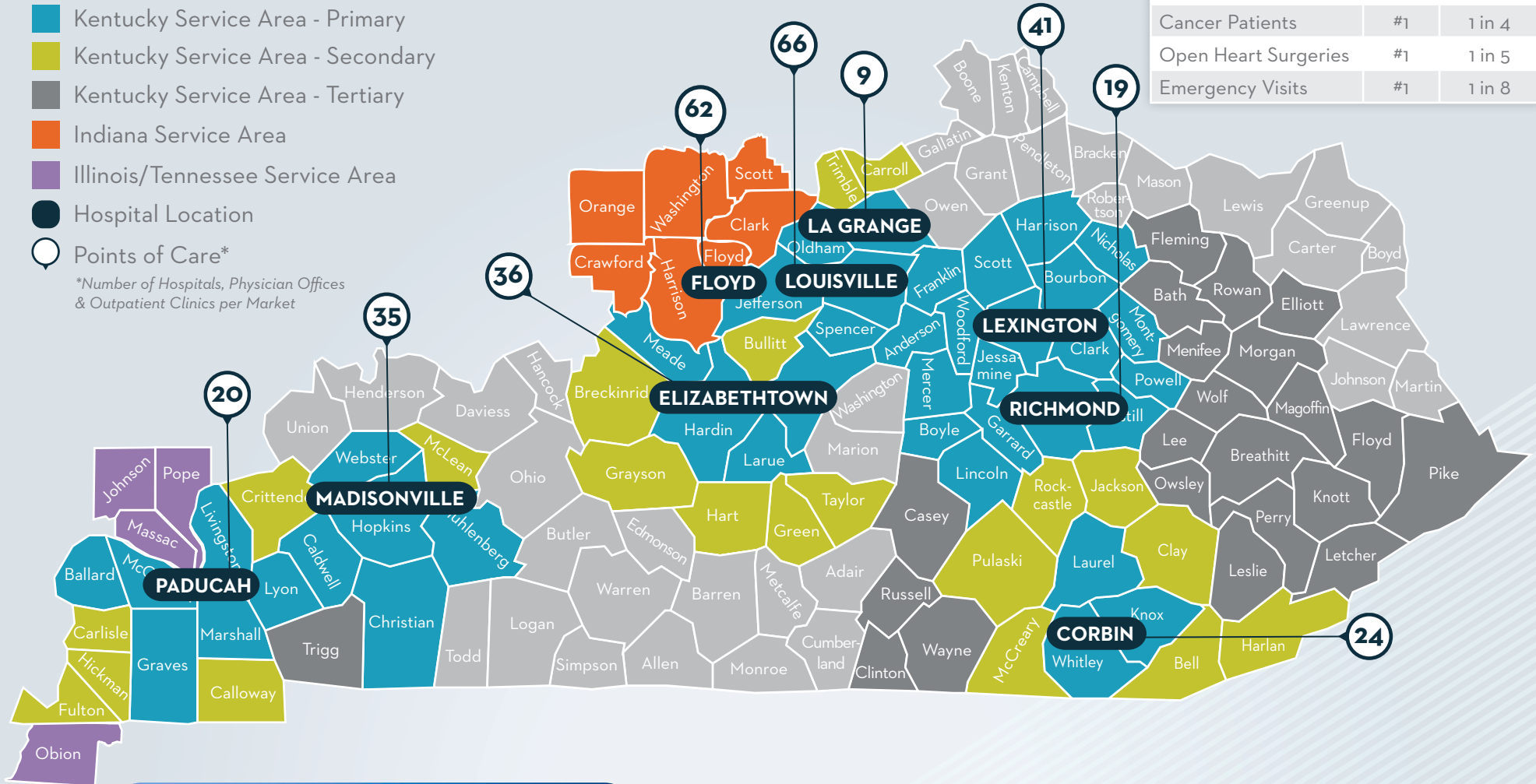
<b>MEDICAL GROUP</b>	1,100 providers – 650 physicians and 450 advanced practice clinicians covering 75 specialties
<b>CARE ADVISING</b>	Serving more than 1,000 patients by helping them coordinate their care and resources
<b>CLINICS</b>	60 clinic locations for Express and Urgent Care, Occupational Medicine and Physical Therapy
<b>HOME CARE</b>	166,000 home visits made by our team of nurses, therapists, medical social workers and aides

All Community Report statistics are from CY 2017. Patient Care figures also include Hardin Memorial Health, managed by Baptist Health.

# SYSTEM SCOPE

- Kentucky Service Area - Primary
- Kentucky Service Area - Secondary
- Kentucky Service Area - Tertiary
- Indiana Service Area
- Illinois/Tennessee Service Area
- Hospital Location
- Points of Care\*

\*Number of Hospitals, Physician Offices & Outpatient Clinics per Market



SERVICE	RANK	VOLUME
Kentucky Births	#1	1 in 5
Admissions	#1	1 in 7
Cancer Patients	#1	1 in 4
Open Heart Surgeries	#1	1 in 5
Emergency Visits	#1	1 in 8



## Baptist Health, Hardin Memorial Health sign letter of intent

In November 2017, Baptist Health signed a letter of intent agreement with Hardin Memorial Health in Elizabethtown, Ky. For the last 20 years, Baptist Health has successfully managed the 300-bed hospital. The next step – expected in 2018 – is a binding purchase agreement. Hardin Memorial Health is a fundamentally strong hospital, strategically located in the center of Kentucky along its fastest growth corridor.